



Christ Church
Grammar School

2021
TEST 2

MATHEMATICS METHODS Year 12

Section One:
Calculator-free

Your name _____

Teacher's name _____

Time and marks available for this section

Reading time before commencing work: 2 minutes
Working time for this section: 15 minutes
Marks available: 15 marks

Materials required/recommended for this section

To be provided by the supervisor

This Question/Answer Booklet
Formula Sheet

To be provided by the candidate

Standard items: pens (blue/black preferred), pencils (including coloured), sharpener,
correction fluid/tape, eraser, ruler, highlighters

Special items: nil

Important note to candidates

No other items may be taken into the examination room. It is **your** responsibility to ensure that you do not have any unauthorised notes or other items of a non-personal nature in the examination room. If you have any unauthorised material with you, hand it to the supervisor **before** reading any further.

Instructions to candidates

1. The rules of conduct of the CCGS assessments are detailed in the Reporting and Assessment Policy. Sitting this assessment implies that you agree to abide by these rules.
2. Write your answers in this Question/Answer Booklet using a blue / black pen. Do not use erasable or gel pens.
3. Answer all questions.
4. You must be careful to confine your response to the specific question asked and to follow any instructions that are specified to a particular question.
5. Supplementary pages for the use of planning/continuing your answer to a question have been provided at the end of this Question/Answer booklet. If you use these pages to continue an answer, indicate at the original answer where the answer is continued, i.e. give the page number.
6. **Show all your working clearly.** Your working should be in sufficient detail to allow your answers to be checked readily and for marks to be awarded for reasoning. Incorrect answers given without supporting reasoning cannot be allocated any marks. For any question or part question worth more than two marks, valid working or justification is required to receive full marks. If you repeat an answer to any question, ensure that you cancel the answer you do not wish to have marked.
7. It is recommended that **you do not use pencil**, except in diagrams.

Question 1**(4 marks)**

Evaluate each of the following integrals (Leave answers with positive indices).

(a) $\int x^4 + \frac{1}{x^2} - \sqrt{x} \, dx$

(2 marks)

(b) $\int \frac{1}{2} \cos\left(\frac{\pi x}{4}\right) dx$

(2 marks)

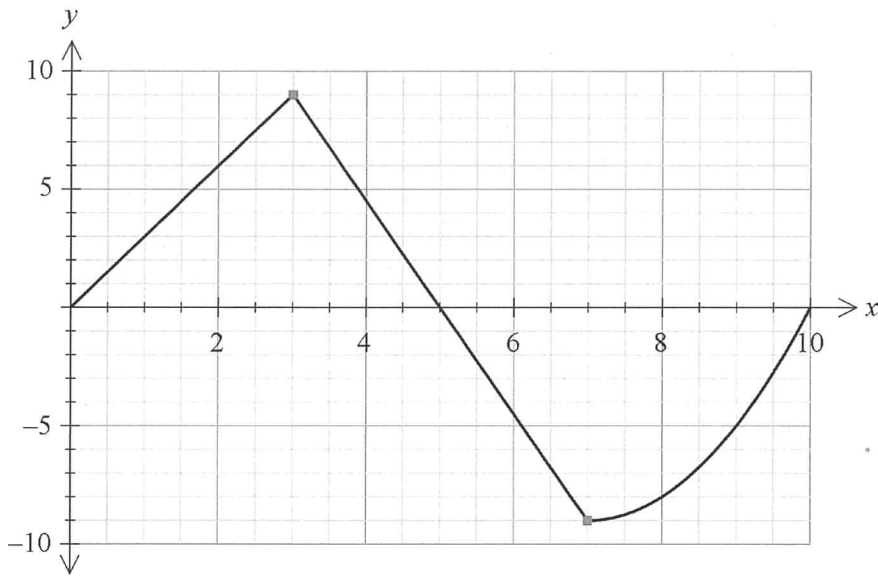
Question 2**(3 marks)**

Given that $f(x)$ is continuous everywhere and that $\int_{-4}^6 f(x)dx = 12$, find the value of $\int_{-4}^6 2x - 2f(x)dx$.

Question 3

(4 marks)

The graph of $y = f(x)$ is shown below. It consists of two straight lines followed by a curve. The area between the function and the x -axis is equal to 50 square units.



(a) $\int_0^5 f(x)dx$

(2 marks)

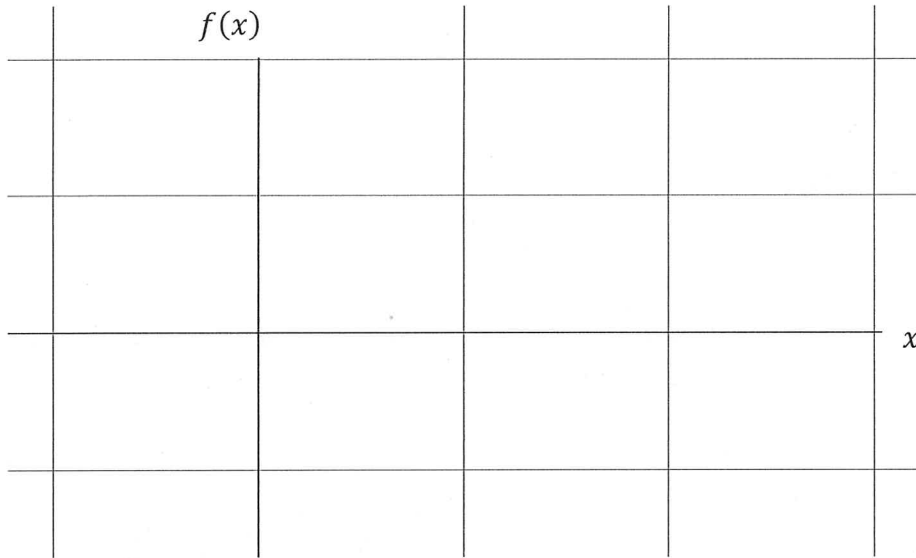
(b) $\int_7^{10} f(x)dx$

(2 marks)

Question 4

(4 marks)

- (a) Sketch the curves $f(x) = \frac{x}{2}$ and $g(x) = x^2 - 2x$ on the axes below, shade the area between the curves and indicate the point(s) of intersection. (2 marks)



- (b) Determine a definite integral that represents the area between the curves. (There is no need to evaluate the integral) (2 marks)



Christ Church Grammar School

2021
TEST 2

MATHEMATICS METHODS Year 12

Section Two:

Calculator-assumed

Your name _____

Teacher's name _____

Time and marks available for this section

Reading time before commencing work: 3 minutes
Working time for this section: 30 minutes
Marks available: 30 marks

Materials required/recommended for this section

To be provided by the supervisor

This Question/Answer Booklet
Formula Sheet (retained from Section One)

To be provided by the candidate

Standard items: pens (blue/black preferred), pencils (including coloured), sharpener, correction fluid/tape, eraser, ruler, highlighters

Special items: drawing instruments, templates, and up to three calculators approved for use in this assessment.

Important note to candidates

No other items may be taken into the examination room. It is **your** responsibility to ensure that you do not have any unauthorised notes or other items of a non-personal nature in the examination room. If you have any unauthorised material with you, hand it to the supervisor **before** reading any further.

Instructions to candidates

1. The rules of conduct of the CCGS assessments are detailed in the Reporting and Assessment Policy. Sitting this assessment implies that you agree to abide by these rules.
2. Write your answers in this Question/Answer Booklet using a blue / black pen. Do not use erasable or gel pens.
3. Answer all questions.
4. You must be careful to confine your response to the specific question asked and to follow any instructions that are specified to a particular question.
5. Supplementary pages for the use of planning/continuing your answer to a question have been provided at the end of this Question/Answer booklet. If you use these pages to continue an answer, indicate at the original answer where the answer is continued, i.e. give the page number.
6. **Show all your working clearly.** Your working should be in sufficient detail to allow your answers to be checked readily and for marks to be awarded for reasoning. Incorrect answers given without supporting reasoning cannot be allocated any marks. For any question or part question worth more than two marks, valid working or justification is required to receive full marks. If you repeat an answer to any question, ensure that you cancel the answer you do not wish to have marked.
7. It is recommended that **you do not use pencil**, except in diagrams.

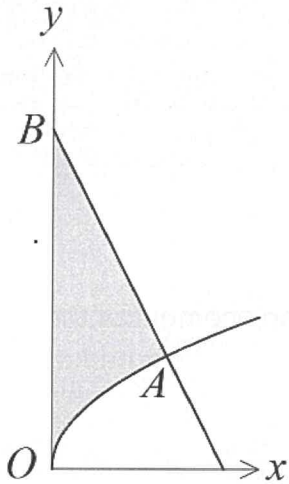
Question 5

(8 marks)

The diagram below shows the graph of the function $y = \sqrt{x}$ and the straight line AB that is perpendicular to the curve at A, where $x = 4$.

- (a) Determine the equation of the line AB.

(3 marks)



- (b) Calculate the shaded area in the diagram, enclosed by the curve $y = \sqrt{x}$, the straight line AB and the y -axis.

(2 marks)

- (c) Determine the area enclosed by the curve $y = \sqrt{x}$, the straight line AB and the x -axis.

(3 marks)

Question 6**(8 marks)**

A small body is moving in a straight line with velocity $v = 2t^2 - 19t + 30$ m/s, where t is the time, in seconds, since the body first passed through the origin, O.

- (a) Determine an expression for $x(t)$, the displacement of the body at time t .
(2 marks)
- (b) Show that the body is stationary twice and find the change in displacement of the body between these two instants.
(3 marks)
- (c) Determine the position of the body when its velocity is a minimum. (3 marks)

Question 7**(3 marks)**

(a) Evaluate the integral $\int_0^2 \left(\frac{1}{1+9x^2} - \frac{1}{10} \right) dx$ to 4 decimal places. (1 marks)

(b) Hence, or otherwise, find the area under the curve of the function

$$f(x) = \frac{1}{1+9x^2} - \frac{1}{10}, \text{ from } x = 0 \text{ to } x = 2.$$

(2 marks)**Question 8****(2 marks)**

A function $f(x)$ passes through the point $\left(\frac{\pi}{6}, -2\right)$. If $f'(x) = \sin(2x)$ then determine $f(x)$.

Question 9**(6 marks)**

The air in a hot air balloon is being inflated such that the rate of change of its volume at any time t , minutes, is given as:

$$\frac{dv}{dt} = 3t^2 - 2t$$

If initially the balloon has 3 m^3 of air in it, then determine

(a) the rate of change in volume when $t = 1$ and interpret this value. (2 marks)

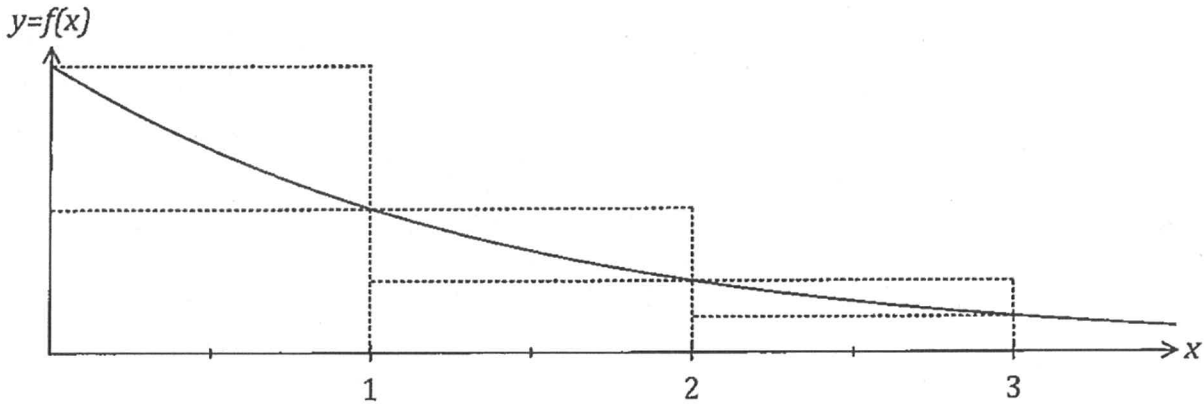
(b) the values of t when the volume is increasing. (2 marks)

(c) the volume of the balloon after 5 seconds. (2 marks)

Question 10

(3 marks)

The function $f(x) = \frac{1}{2^x}$ is shown below.



- (a) Using the sum of the inscribed rectangles shown in the diagram explain why $\int_0^3 f(x)dx > \frac{7}{8}$. (2 marks)

- (b) If we use the average of the sum of the areas of the inscribed rectangles and the sum of the areas of the circumscribed rectangles from the diagram above we can determine an estimate for $\int_0^3 f(x)dx$. Suggest a modification to this method to achieve a better estimate for $\int_0^3 f(x)dx$. (1 mark)

Additional working space

Question number: _____



MATHEMATICS METHODS Year 12

Section One: Calculator-free

Your name _____ *- SOLUTIONS -*

Teacher's name _____

Time and marks available for this section

Reading time before commencing work: 2 minutes
Working time for this section: 15 minutes
Marks available: 15 marks

Materials required/recommended for this section

To be provided by the supervisor

This Question/Answer Booklet
Formula Sheet

To be provided by the candidate

Standard items: pens (blue/black preferred), pencils (including coloured), sharpener,
correction fluid/tape, eraser, ruler, highlighters

Special items: nil

Important note to candidates

No other items may be taken into the examination room. It is **your** responsibility to ensure that you do not have any unauthorised notes or other items of a non-personal nature in the examination room. If you have any unauthorised material with you, hand it to the supervisor **before** reading any further.

Instructions to candidates

1. The rules of conduct of the CCGS assessments are detailed in the Reporting and Assessment Policy. Sitting this assessment implies that you agree to abide by these rules.
2. Write your answers in this Question/Answer Booklet.
3. Answer all questions.
4. You must be careful to confine your response to the specific question asked and to follow any instructions that are specified to a particular question.
5. Supplementary pages for the use of planning/continuing your answer to a question have been provided at the end of this Question/Answer booklet. If you use these pages to continue an answer, indicate at the original answer where the answer is continued, i.e. give the page number.
6. **Show all your working clearly.** Your working should be in sufficient detail to allow your answers to be checked readily and for marks to be awarded for reasoning. Incorrect answers given without supporting reasoning cannot be allocated any marks. For any question or part question worth more than two marks, valid working or justification is required to receive full marks. If you repeat an answer to any question, ensure that you cancel the answer you do not wish to have marked.
7. It is recommended that **you do not use pencil**, except in diagrams.

Question 1

(4 marks)

Evaluate each of the following integrals (Leave answers with positive indices)

(a) $\int x^4 + \frac{1}{x^2} - \sqrt{x} \, dx$

(2 marks)

$$\int x^4 + x^{-2} - x^{\frac{1}{2}} \, dx$$

$$= \frac{x^5}{5} - \frac{x^{-1}}{-1} - \frac{x^{\frac{3}{2}}}{\frac{3}{2}} + C \quad \checkmark$$

$$= \frac{x^5}{5} - \frac{1}{x} - \frac{2x^{\frac{3}{2}}}{3} + C \quad \checkmark \text{ [pos ind. } +C]$$

(b) $\int \frac{1}{2} \cos\left(\frac{\pi x}{4}\right) \, dx$

(2 marks)

$$= \frac{1}{2} \int \cos \frac{\pi x}{4} \, dx$$

$$= \frac{\frac{1}{2} \sin \frac{\pi x}{4}}{\frac{\pi}{4}} + C \quad \checkmark \text{ [Integrates]}$$

$$= \frac{2}{\pi} \sin \frac{\pi x}{4} + C \quad \checkmark \text{ [Tidy up]}$$

Question 2

(3 marks)

Given that $f(x)$ is continuous everywhere and that $\int_{-4}^6 f(x) dx = 12$, find the value of $\int_{-4}^6 2x - 2f(x) dx$.

$$= \int_{-4}^6 2x dx - 2 \int_{-4}^6 f(x) dx$$

$$= \left[x^2 \right]_{-4}^6 - 2 \times 12$$

✓ $\left[\int 2x dx \right]$

✓ $\left[-2 \int f(x) dx \right]$

$$= 36 - 16 - 24$$

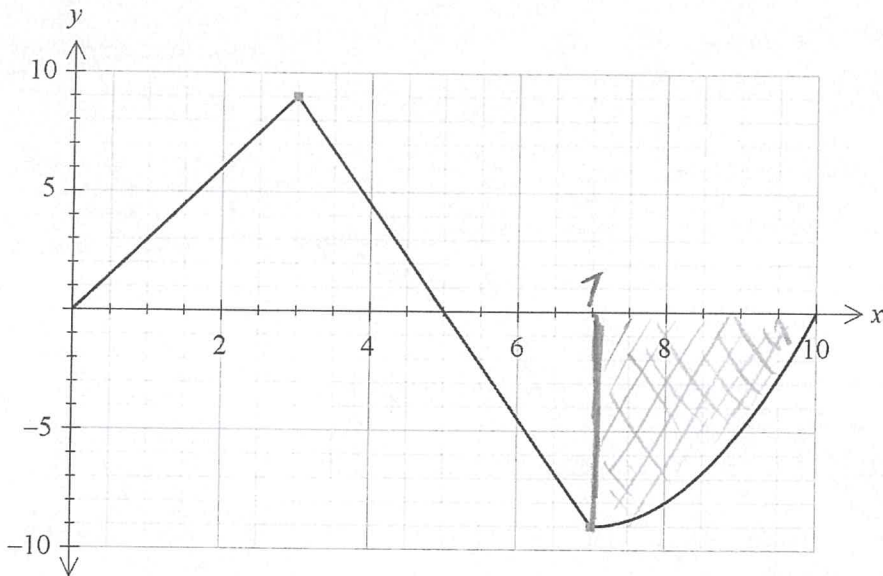
$$= \textcircled{-4}$$

✓ [Answ]

Question 3

(4 marks)

The graph of $y = f(x)$ is shown below. It consists of two straight lines followed by a curve. The area between the function and the x -axis is equal to 50 square units.



(a) $\int_0^5 f(x) dx$

Area of $\triangle ABC$

(2 marks)

$= \frac{1}{2} (5)(9)$ ✓ [working]

$= 22.5$ ✓ [answ]

(b) $\int_7^{10} f(x) dx$

- (Shaded Area)

(2 marks)

$= 50 - (22\frac{1}{2} + \frac{1}{2}(2)(9))$

$= 50 - 31\frac{1}{2}$

✓ [working]

$= 18\frac{1}{2}$

$\therefore \int_7^{10} f(x) dx =$

$18\frac{1}{2}$ ✓ [Answ]

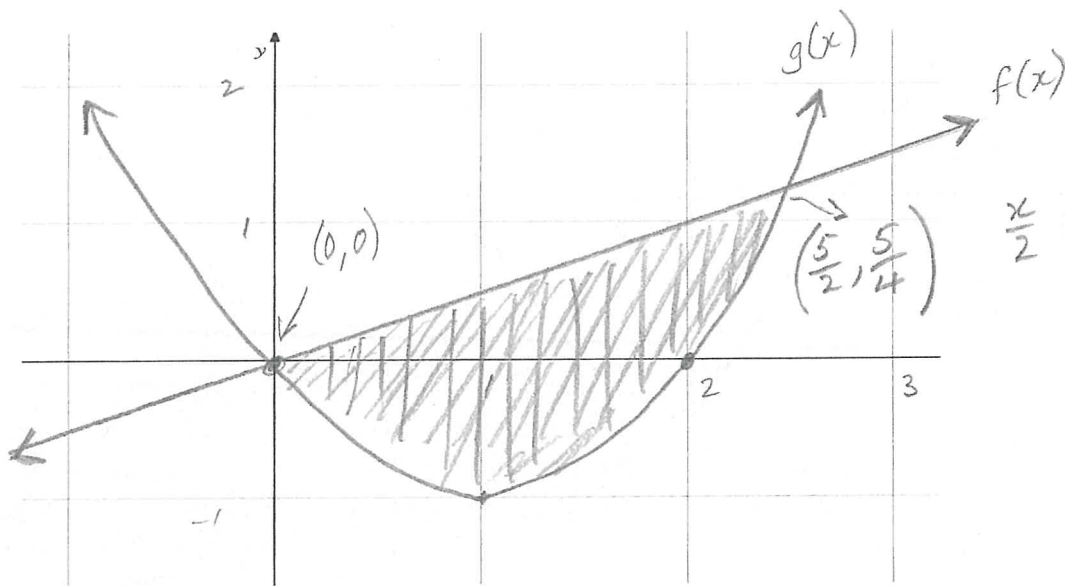
4

Question 4

(4 marks)

- (a) Sketch the curves $f(x) = \frac{x}{2}$ and $g(x) = x^2 - 2x$ on the axes below, shade the area between the curves and indicate the point(s) of intersection. (2 marks)

$$g(x) = x(x-2)$$



$$\begin{aligned} \frac{x}{2} &= x^2 - 2x \\ 2x^2 - 4x - x &= 0 \\ 2x^2 - 5x &= 0 \\ x(2x - 5) &= 0 \\ x &= \frac{5}{2} \end{aligned}$$

✓ [shaded region]

✓ [Points of intersection]

- (b) Determine a definite integral that represents the area between the curves. (There is no need to evaluate the integral) (2 marks)

$$\int_0^{\frac{5}{2}} \left(\frac{x}{2} - (x^2 - 2x) \right) dx \quad \text{OR} \quad \int_0^{\frac{5}{2}} f(x) - g(x) dx$$

✓ [x-values]

✓ [f(x) - g(x)]

4

End of Questions

Additional working space

Question number: _____



Christ Church
Grammar School

2021
TEST 2

MATHEMATICS METHODS Year 12

Section Two:

Calculator-assumed

Your name _____

Teacher's name _____

Time and marks available for this section

Reading time before commencing work: 3 minutes
Working time for this section: 30 minutes
Marks available: 30 marks

Materials required/recommended for this section

To be provided by the supervisor

This Question/Answer Booklet
Formula Sheet (retained from Section One)

To be provided by the candidate

Standard items: pens (blue/black preferred), pencils (including coloured), sharpener, correction fluid/tape, eraser, ruler, highlighters

Special items: drawing instruments, templates, and up to three calculators approved for use in the WACE examinations

Important note to candidates

No other items may be taken into the examination room. It is **your** responsibility to ensure that you do not have any unauthorised notes or other items of a non-personal nature in the examination room. If you have any unauthorised material with you, hand it to the supervisor **before** reading any further.

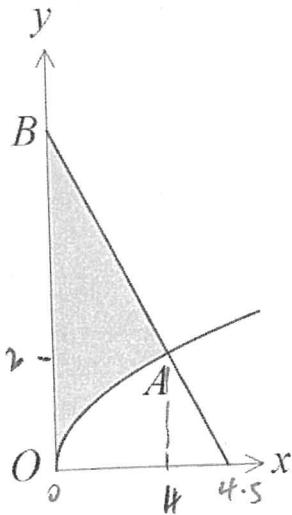
Instructions to candidates

1. The rules of conduct of the CCGS assessments are detailed in the Reporting and Assessment Policy. Sitting this assessment implies that you agree to abide by these rules.
2. Write your answers in this Question/Answer Booklet.
3. Answer all questions.
4. You must be careful to confine your response to the specific question asked and to follow any instructions that are specified to a particular question.
5. Supplementary pages for the use of planning/continuing your answer to a question have been provided at the end of this Question/Answer booklet. If you use these pages to continue an answer, indicate at the original answer where the answer is continued, i.e. give the page number.
6. **Show all your working clearly.** Your working should be in sufficient detail to allow your answers to be checked readily and for marks to be awarded for reasoning. Incorrect answers given without supporting reasoning cannot be allocated any marks. For any question or part question worth more than two marks, valid working or justification is required to receive full marks. If you repeat an answer to any question, ensure that you cancel the answer you do not wish to have marked.
7. It is recommended that **you do not use pencil**, except in diagrams.

(8 marks)

Question 5

The diagram below shows the graph of the function $y = \sqrt{x}$ and the straight line AB that is perpendicular to the curve at A, where $x = 4$.



(a) Determine the equation of AB. (3 marks)

$$y = x^{1/2}$$

$$\frac{dy}{dx} \Big|_{x=4} = \frac{1}{4}$$

$$\therefore m_{AB} = -4 \quad \checkmark \text{ (} m_{\perp} \text{)}$$

$$y = -4x + c \quad \text{(sub in 4, 2)}$$

$$2 = -4(4) + c$$

$$c = 18 \quad \checkmark \text{ (c-value)}$$

$$\text{Equ } y = -4x + 18 \quad \checkmark \text{ [Equ]}$$

(b) Determine the shaded area in the diagram, enclosed by the curve $y = \sqrt{x}$, the straight line AB and the y-axis. (2 marks)

$$\int_0^4 (-4x + 18) - \sqrt{x} \, dx = \frac{104}{3} \quad \checkmark \text{ [Integral]}$$

$$= 34.6 \text{ units}^2 \quad \checkmark \text{ [Answer]}$$

(c) Determine the area enclosed by the curve $y = \sqrt{x}$, the straight line AB and the x-axis. (3 marks)

AB cuts x-axis at 4.5 $(0 = -4x + 18)$ \checkmark [x-int]

$$\therefore \Delta = \frac{1}{2}(4.5) \times 18 - \frac{104}{3} \leftarrow \text{from (b)} \quad \checkmark \text{ [Subtract areas]}$$

$$= 40.5 - \frac{104}{3} \Rightarrow 5.8\bar{3} \text{ units}^2 \quad \checkmark \text{ [ANSW]}$$

$(\frac{35}{6})$

$$\int_0^4 \sqrt{x} \, dx + \frac{1}{2} \times \frac{1}{2} \times 2$$

$$= 5\frac{1}{3} + \frac{1}{2}$$

$$= 5.8\bar{3} \text{ u}^2$$

Question 6

(8 marks)

A small body is moving in a straight line with velocity $v = 2t^2 - 19t + 30$ m/s, where t is the time, in seconds, since the body first passed through the origin, O.

- (a) Determine an expression for $x(t)$, the displacement of the body at time t .

(2 marks)

$$x(t) = \int v(t) dt$$

$$= \int 2t^2 - 19t + 30 dt \quad \checkmark \quad [\text{integral}]$$

$$x(t) = \frac{2}{3}t^3 - \frac{19t^2}{2} + 30t \quad \checkmark \quad [\text{Answ}]$$

No +c as $t=0$
 $x=0$

- (b) Show that the body is stationary twice and find the change in displacement of the body between these two instants.

(3 marks)

Stationary: $v=0 \Rightarrow 2t^2 - 19t + 30 = 0$ CR $\Delta = 121$
 $\Delta > 0 \therefore 2 \text{ sol}^n$

$$t=2 \text{ and } t=15/2 \quad \checkmark \quad [\text{both } t \text{ values}]$$

$$\int_2^{7.5} x(t) dt = \frac{-1331}{24} \quad \checkmark \quad [\text{integral}]$$

$$= -55.46 \text{ m} \quad \checkmark \quad [\text{ANSW}]$$

$\frac{82}{3} (27.3) \rightarrow t=2$
 $-\frac{225}{8} (-28.125) \rightarrow t=7.5$

- (c) Determine the position of the body when its velocity is a minimum.

(3 marks)

$$v'(t) = 4t - 19 \quad \checkmark \quad [v'(t)] \quad \text{Min } v'(t) = 0$$

$$t = \frac{19}{4} (4.75) \quad \checkmark \quad [t\text{-value}]$$

$$x(4.75) = -\frac{19}{48}$$

$$\approx -0.396 \text{ m} \quad \checkmark \quad [\text{ANSW}]$$

Question 7

(3 marks)

- (a) Evaluate the integral $\int_0^2 \left(\frac{1}{1+9x^2} - \frac{1}{10} \right) dx$ to 4 decimal places. (1 mark)

$= \underline{\underline{0.2685}}$ ✓ [value]
 Just warning if not to 4 dp.

- (b) Hence, or otherwise, find the area under the curve of the function

$f(x) = \frac{1}{1+9x^2} - \frac{1}{10}$, from $x = 0$ to $x = 2$.

(2 marks)

$\int_0^2 |f(x)| dx = 0.3641 \text{ units}^2$ ✓

Question 8

(2 marks)

A function $f(x)$ passes through the point $\left(\frac{\pi}{6}, -2\right)$. If $f'(x) = \sin(2x)$ find $f(x)$.

$f(x) = \frac{-\cos(2x)}{2} + C$

sub in $\left(\frac{\pi}{6}, -2\right)$

$-2 = \frac{-\cos \frac{\pi}{3}}{2} + C$

$-2 = \frac{-\frac{1}{2}}{2} + C$

$\therefore C = \frac{-7}{4}$

✓ [c-value]

$\Rightarrow f(x) = \frac{-\cos(2x)}{2} - \frac{7}{4}$ ✓ [Equ f(x)]

See next page

Question 9

(6 marks)

The air in a hot air balloon is being inflated such that the rate of change of its volume at any time t , minutes, is given as:

$$\frac{dv}{dt} = 3t^2 - 2t$$

If initially the balloon has 3 m^3 of air in it, determine:

- (a) the rate of change in volume when $t = 1$. Explain the meaning of this. (2 marks)

$$\left. \frac{dv}{dt} \right|_{t=1} = \underline{1 \text{ m}^3/\text{min}} \quad \checkmark \text{ [ANSW]}$$

Volume instantaneously increasing at 1 m^3 every minute

\checkmark [must use term 'instantaneously']

- (b) for what values of t the volume is increasing. (2 marks)

$$v(t) = \underline{t^3 - t^2 + 3} \quad \checkmark_{[v(t)]} \quad (+3 \text{ as initially has } 3 \text{ m}^3)$$

Looking at graph on Cpad

Increasing for

$$\underline{t > \frac{2}{3}}$$

\checkmark [ANSW]

- (c) the volume of the balloon after 5 seconds. (2 marks)

$$V = \left(\frac{5}{60}\right)^3 - \left(\frac{5}{60}\right)^2 + 3$$

$$V = \underline{\underline{2.99 \text{ m}^3}}$$

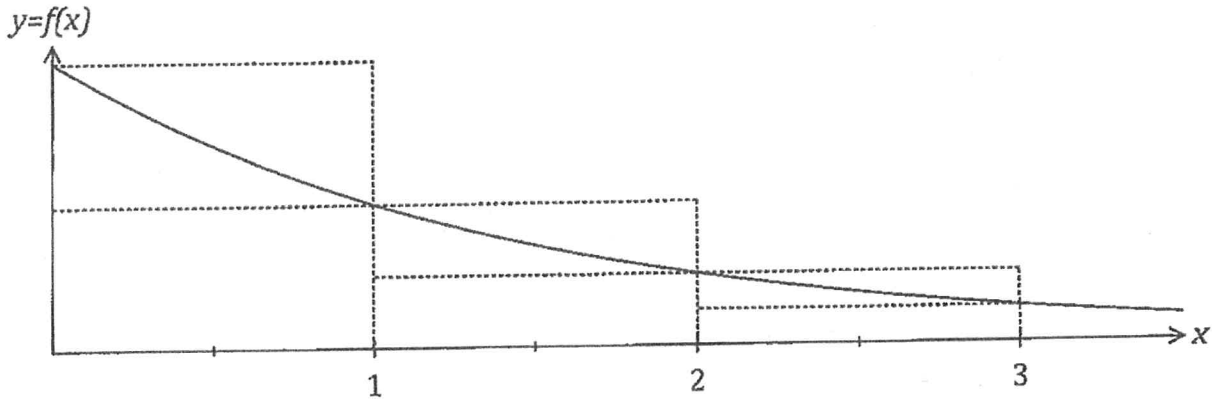
$\checkmark\checkmark$

[ANSW + UNITS]

Question 10

(3 marks)

The function $f(x) = \frac{1}{2^x}$ is shown below.



- (a) Using the sum of the inscribed rectangles shown in the diagram explain why $\int_0^3 f(x) dx > \frac{7}{8}$. (2 marks)

Underestimate : $(1 \times \frac{1}{2}) + (1 \times \frac{1}{2^2}) + (1 \times \frac{1}{2^3})$
 $= \frac{1}{2} + \frac{1}{4} + \frac{1}{8}$ ✓ [calculations]
 $= \frac{7}{8}$

Since its an underestimate $\int_0^3 f(x) dx > \frac{7}{8}$ ✓ [comment]

- (b) If we use the average of the sum of the areas of the inscribed rectangles and the sum of the areas of the circumscribed rectangles from the diagram above we can determine an estimate for $\int_0^3 f(x) dx$. Suggest a modification to this method to achieve a better estimate for $\int_0^3 f(x) dx$. (1 mark)

Increase number of rectangles
Smaller width rectangles etc... ✓ [either]

3